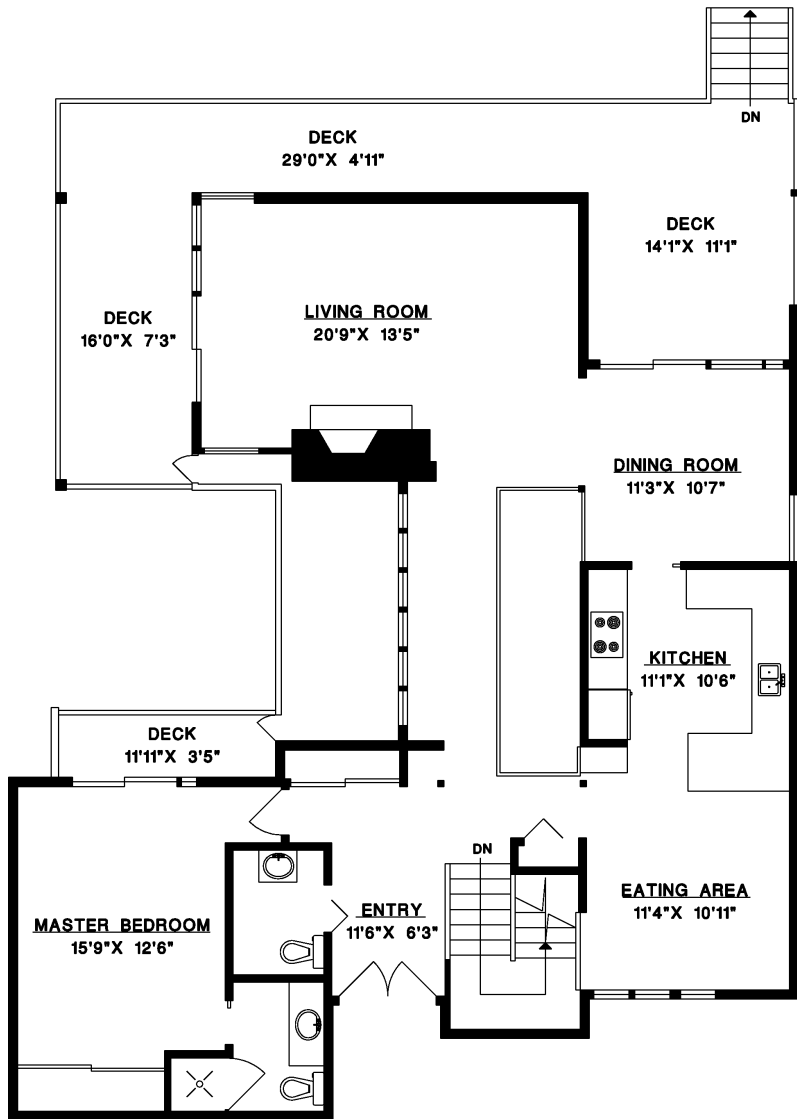




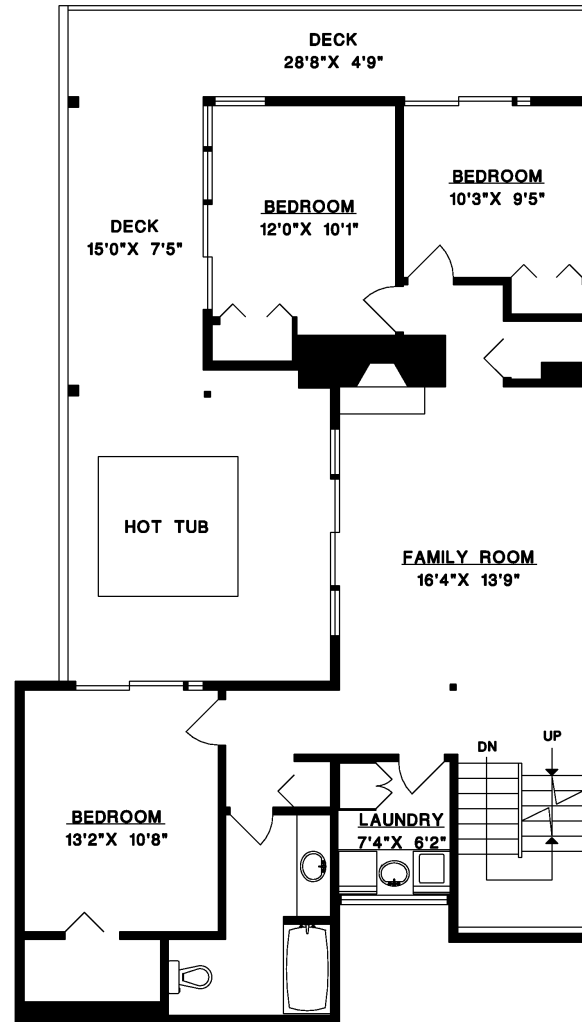
**JASON SOPROVICH**  
 EXCELLENCE IN THE LUXURY HOME MARKET  
 604.817.8812

1855 LAYTON DRIVE  
 NORTH VANCOUVER

MAIN FLOOR	1,371 SQ.FT.
LOWER FLOOR	1,106 SQ.FT.
BOTTOM FLOOR	111 SQ.FT.
<b>TOTAL</b>	<b>2,588 SQ.FT.</b>
WORKSHOP	198 SQ.FT.
UTILITY	120 SQ.FT.
STORAGE	81 SQ.FT.
DECKS	1,008 SQ.FT.



**MAIN FLOOR**



**LOWER FLOOR**

