

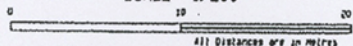
REFERENCE PLAN OF EASEMENTS OVER PARTS OF  
 LOTS 25 AND 26, BLOCK 1  
**BOTH OF DISTRICT LOT 771**

GROUP ONE, NEW WESTMINSTER DISTRICT

PLAN 6025  
 BCGS 926 034  
 SCALE 1: 200

PLAN BCP

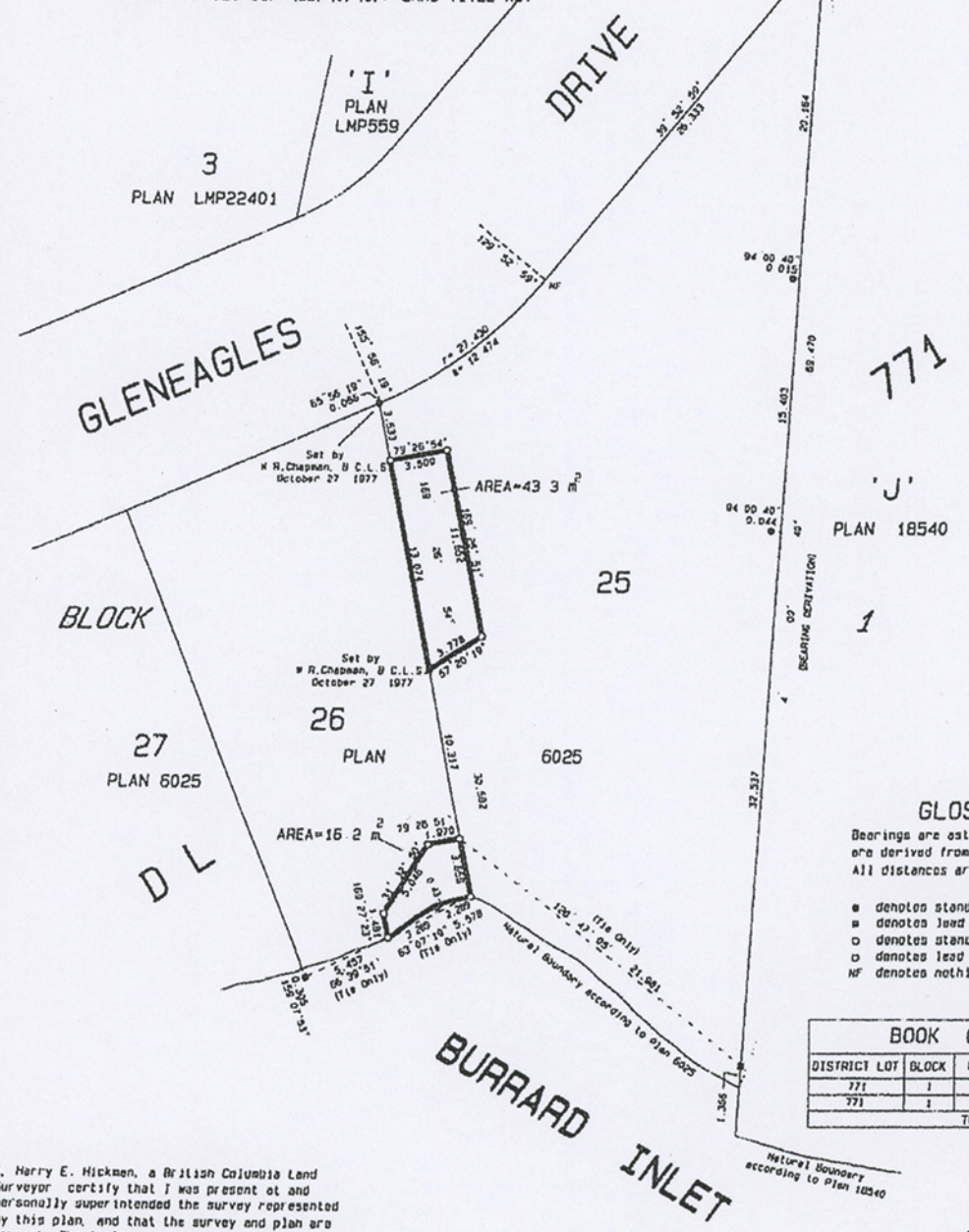
Deposited in the Land Title  
 Office at New Westminster, B.C.  
 this \_\_\_ day of \_\_\_\_\_ 2011.



All distances are in metres  
 The intended plot size of this plan is  
 432 m in width by 560 m in height  
 (C size) when plotted at a scale of 1:200

FOR ACCESS PURPOSES  
 PURSUANT TO SECTION (99) (1) (e), LAND TITLE ACT

Registrar



**GLOSS**  
 Bearings are astronomic and  
 are derived from Plan 18540  
 All distances are in metres

- denotes standard iron post found in place
- denotes lead plug found in place
- denotes standard iron post set
- denotes lead plug set
- ∅ denotes nothing found

BOOK OF REFERENCE					
DISTRICT LOT	BLOCK	LOT	PLAN	AREA	REMARKS
771	1	25	6025	43.3 m²	
771	1	26	6025	16.2 m²	
				TOTAL AREA	59.5 m²

I, Harry E. Hickman, a British Columbia Land Surveyor certify that I was present at and personally superintended the survey represented by this plan, and that the survey and plan are correct. The field survey was completed on the 15th day of February, 2011. The plan was completed and checked, and the checklist filed under # 120002 on the 17th day of February, 2011.

**CHAPMAN LAND SURVEYING LTD**  
 British Columbia Land Surveyors  
 # 107-100 Park Royal South  
 WEST VANCOUVER, B.C.  
 V7T 1A2 604-926-7311  
 FAX 604-926-6923

THIS PLAN LIES WITHIN THE GREATER  
 VANCOUVER REGIONAL DISTRICT.