



BELLEVUE

DUNDARAVE

IMMACULATELY APPOINTED ONE-OF-A-KIND HOMES

EXCEPTIONAL SKY HOMES

- Thirty-five unprecedented private residences perched on the prestigious shores of West Vancouver
- Spend your time in the utmost comfort on your luxurious private outdoor terrace lounge with endless ocean views
- Select from two beautifully curated design styles to suit your personal aesthetic throughout the kitchen, bathrooms, and living areas:
 - West Coast: A contemporary aesthetic that exhibits clean lines and smooth finishes, such as flat panel cabinets and sleek Sub Zero and Wolf appliances
 - Classic: Speaks to the beauty of traditional craftsmanship with raised panel and double shaker cabinets with premium Sub Zero and Wolf appliances
- Personalize your home to suit your tastes by selecting a kitchen layout and stone, wood, and cabinet styles
- Enjoy the security of your very own private multi-car garage
- The extravagance of over height ceilings enhances already spacious living areas
- Dramatic 7' wide marble-wrapped feature fireplace boldly anchors the living area, emitting warmth in the cooler months
- Maintain a desirable climate with energy-efficient forced-air heating and cooling
- Automation provides simplistic control of roller blinds and lighting to create your ideal ambiance
- Keep your most valuable possessions within a secure safe in the master closet
- Spacious walk-in closets with built-in closet organizers neatly display your clothing for easy selection

EVOCATIVE KITCHENS

- All kitchens feature a functional walk-through layout, ample storage space, and seamless design
- Personalize every aspect of your kitchen according to your tastes, including layout, cabinet finish, fixture, stone and wood style, and appliance models
- Three unique layouts speak to how you prefer to conduct your culinary endeavours:
 - Immaculate: A smooth, uninterrupted island surface complements an appliance wall outside of the workspace and a sink in the perimeter countertop
 - Workspace: The appliance wall and an island sink basin are each within the workspace, while a bar with glass cabinets above compels you to serve your favourite cocktails
 - Ensemble: A sink basin brings more functionality to the island and creates more perimeter countertop space, while an appliance wall stands apart
- Sweeping 8' engineered quartz island impresses with waterfall edges and storage below the eating bar
- The finest professional-grade appliances from Wolf, Sub-Zero, and Asko:
 - 36" stainless steel five-burner Wolf gas cooktop
 - 36" stainless steel four-speed Wolf hood fan
 - 30" integrated Wolf steam oven
 - 30" stainless steel Wolf wall oven
 - 24" integrated, fully automated Wolf espresso machine with built-in cup warmer
 - 30" integrated warming drawer

- Side-by-side 24" integrated Sub-Zero refrigerator and freezer columns
- Two additional 24" integrated refrigerator drawers
- Dual 24" integrated Sub-Zero wine refrigerator
- Fully-integrated energy and water efficient Asko dishwasher with quiet wash and steam finish options
- Exquisite quartz countertops lie below an eye-catching feature backsplash of the finest marble
- Impressive millwork perfectly frames your dream kitchen from floor to ceiling

A MASTER ENSUITE RETREAT

- The epitome of luxury is characterized by the striking marble wall that spreads from the floor to the 9' ceiling
- Flawless stone countertops span the two vanities, each punctuated by an under-mount basin and wall-mounted faucets
- Vanities are illuminated by wall sconces, recessed lighting, and brightened by under-cabinet lighting
- Separating the side-by-side vanities is a spacious 9' feature cabinet
- Step onto the warmth of heated marble floors and enjoy the luxury of towel warmers
- For a true spa experience sink into an alluring free-standing soaker tub or relax under a rain shower with heated stone bench and linear tiled drains
- Water closets and showers are encased with frameless glass for extra privacy
- Wall-mounted, dual-flush toilet conveys sophistication

DECADENT POWDER ROOMS

- The aesthetic behind the vanity and floating mirror is determined by your selection of designer scheme:
 - West Coast: Lustrous back-painted glass
 - Classic: Elegant diamond-patterned marble mosaic tile
- Vessel sink basin with wall-mounted faucet sits atop a natural stone countertop beautifully backlit to radiate a soft glow, and further brightened with a refined lighting fixture
- Collect precious items within a niched storage space to the side of the vanity
- Stone tile flooring and a wall-mounted toilet streamline the luxurious visual

PRIVATE OUTDOOR TERRACE LOUNGES

- Relish breathtaking ocean views from your large outdoor living room
- A 10-13' opening to the outdoors is revealed upon sliding multi-paneled glass doors
- Comfortably entertain year-round with a selection of welcoming built-in elements:
 - Cook outdoor feasts with a built-in BBQ
 - Accompany the view with your favourite music through exterior speakers
 - Enjoy the outdoors day or night with heaters to keep you warm when you feel the ocean breeze
- Flush interior flooring shifts smoothly to stone patio tiles



BELLEVUE

DUNDAVAE

LAWSON

2 Bedroom and Family Room

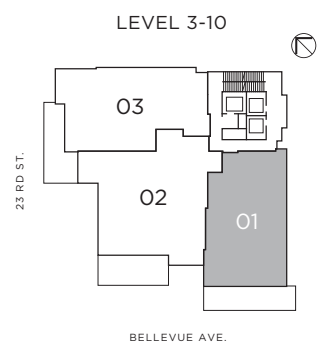
2.5 Bath

Interior: 1,954 sq.ft.

Exterior: 417 sq.ft.



ENJOY THE SERENITY OF MORNING SUNRISES WITH A BANK OF WINDOWS SPANNING THE SOUTH AND EAST. A KITCHEN WINDOW ILLUMINATES BREAKFAST, WHILE THE MASTER BEDROOM WITH ACCESS TO THE EXPANSIVE PATIO STARTS YOUR DAYS WITH FRESH AIR.





BELLEVUE

DUNDRAVE

STEARMAN

2 Bedroom and Family Room

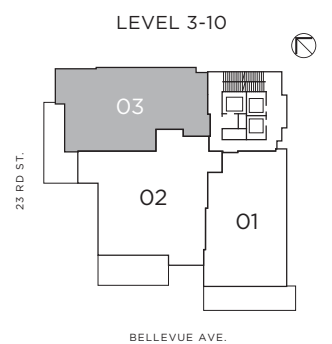
2.5 Bath

Interior: 2,081 sq.ft.

Exterior: 375 sq.ft.



ADMIRE THE STUNNING OCEAN PANORAMA UPON ENTRY TO YOUR RESIDENCE. YOUR EYE-LINE SWEEPS DIRECTLY THROUGH THE KITCHEN AND LIVING AREA TO THE EXPANSIVE PATIO, WHERE SOUTH AND WEST OUTLOOKS CAPTURE THE BREATHTAKING SUNSET EVERY SINGLE NIGHT.





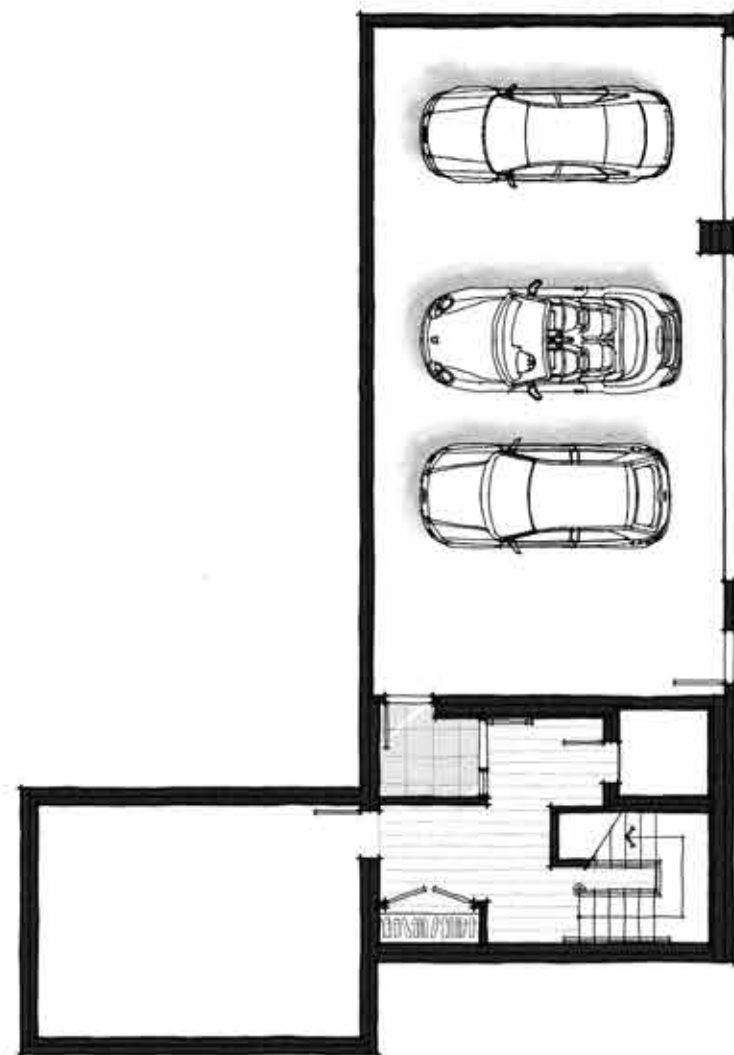
BELLEVUE

DUNDARAVE

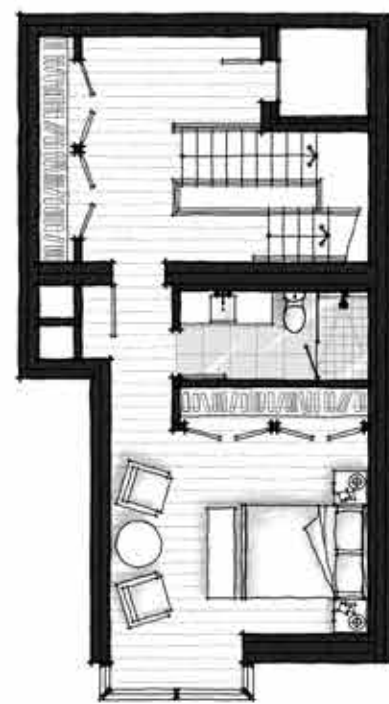
LIGHTHOUSE

3 Bedroom + Den
3.5 Bath
Level One: 286 sq.ft.
Level Two: 661 sq.ft.
Level Three: 1,667 sq.ft.
Level Four: 1,283 sq.ft.
TOTAL: 3,897 sq. ft.

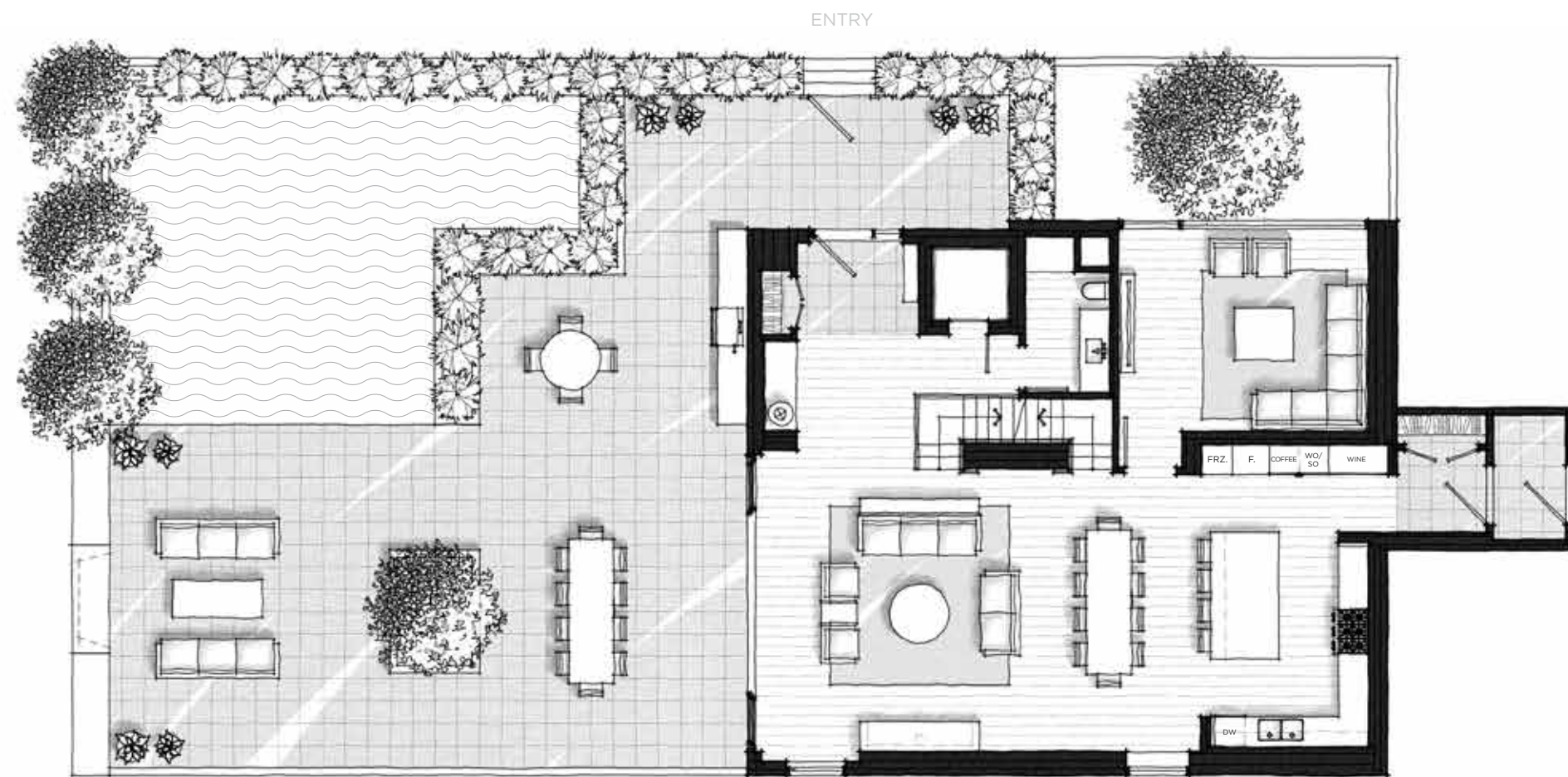
Patio: 2,953 sq.ft.



Level One



Level Two



Level Three



Level Four

OUTDOOR ENTERTAINING AND RELAXATION RECEIVE PROMINENCE ON A GRAND TERRACE WITH AREAS ALLOCATED FOR DINING, COOKING, AND LOUNGING. A SEPARATE LEVEL FOR GUESTS PROVIDES PRIVACY, WHILE A FAMILY ROOM LOCATED OFF THE MAIN LIVING AREA MAINTAINS CONNECTION.

