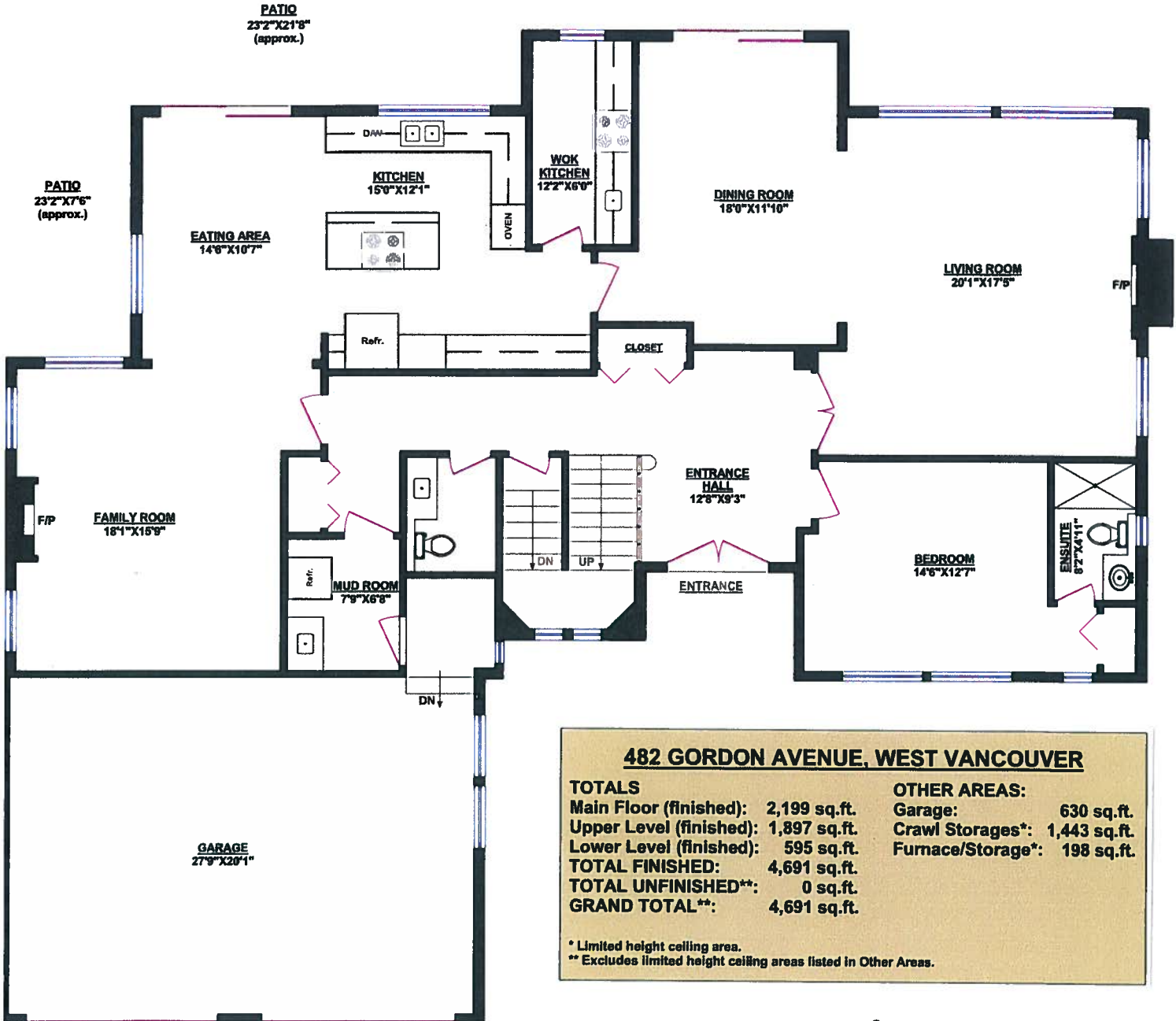


JASON SOPROVICH

MARKETING VANCOUVER'S MOST ELEGANT HOMES AND LUXURY REAL ESTATE

+1.604.817.8812



MAIN FLOOR

482 GORDON AVENUE, WEST VANCOUVER

TOTALS

Main Floor (finished): 2,199 sq.ft.
 Upper Level (finished): 1,897 sq.ft.
 Lower Level (finished): 595 sq.ft.
TOTAL FINISHED: 4,691 sq.ft.
TOTAL UNFINISHED:** 0 sq.ft.
GRAND TOTAL:** 4,691 sq.ft.

OTHER AREAS:

Garage: 630 sq.ft.
 Crawl Storages*: 1,443 sq.ft.
 Furnace/Storage*: 198 sq.ft.

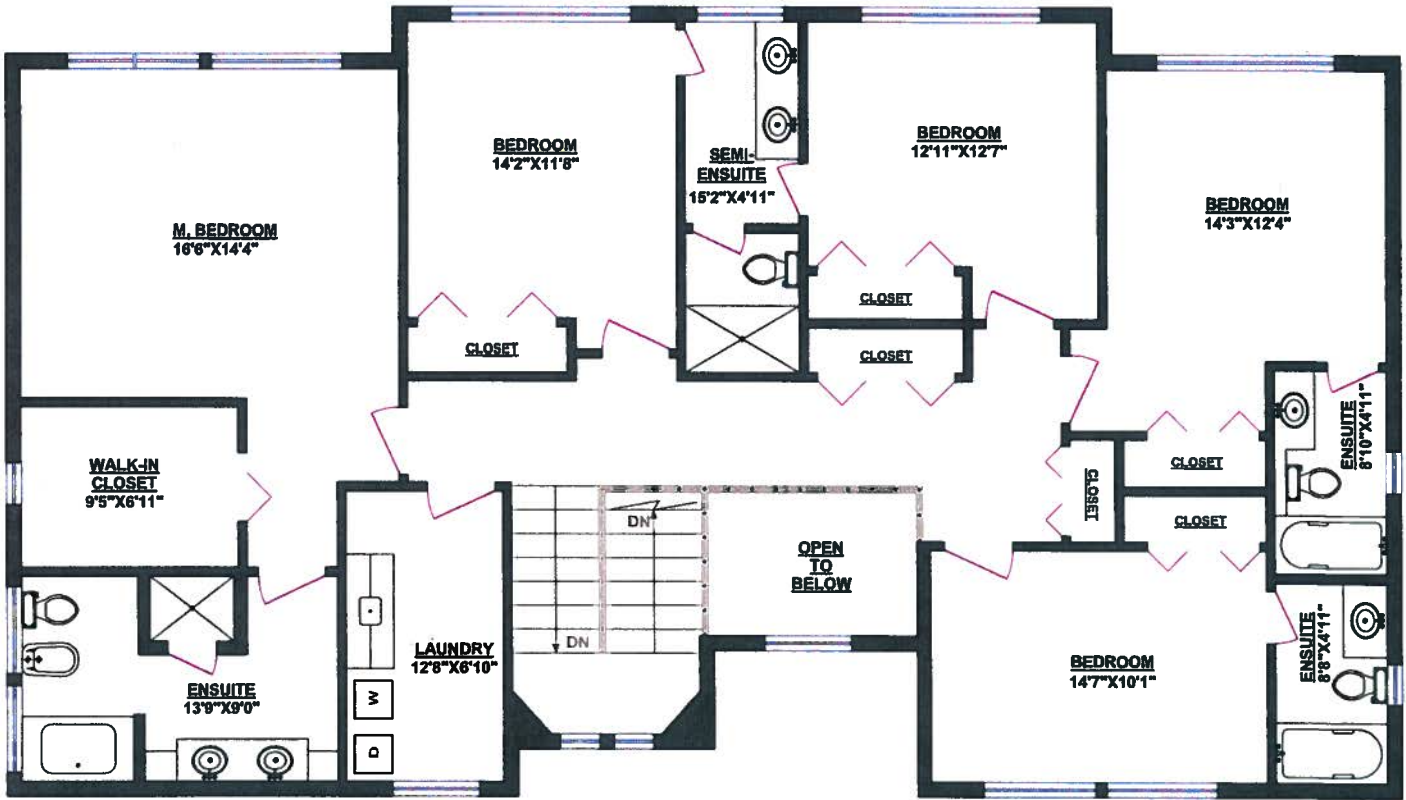
* Limited height ceiling area.

** Excludes limited height ceiling areas listed in Other Areas.



0 1 2 3 4 5 6
ft

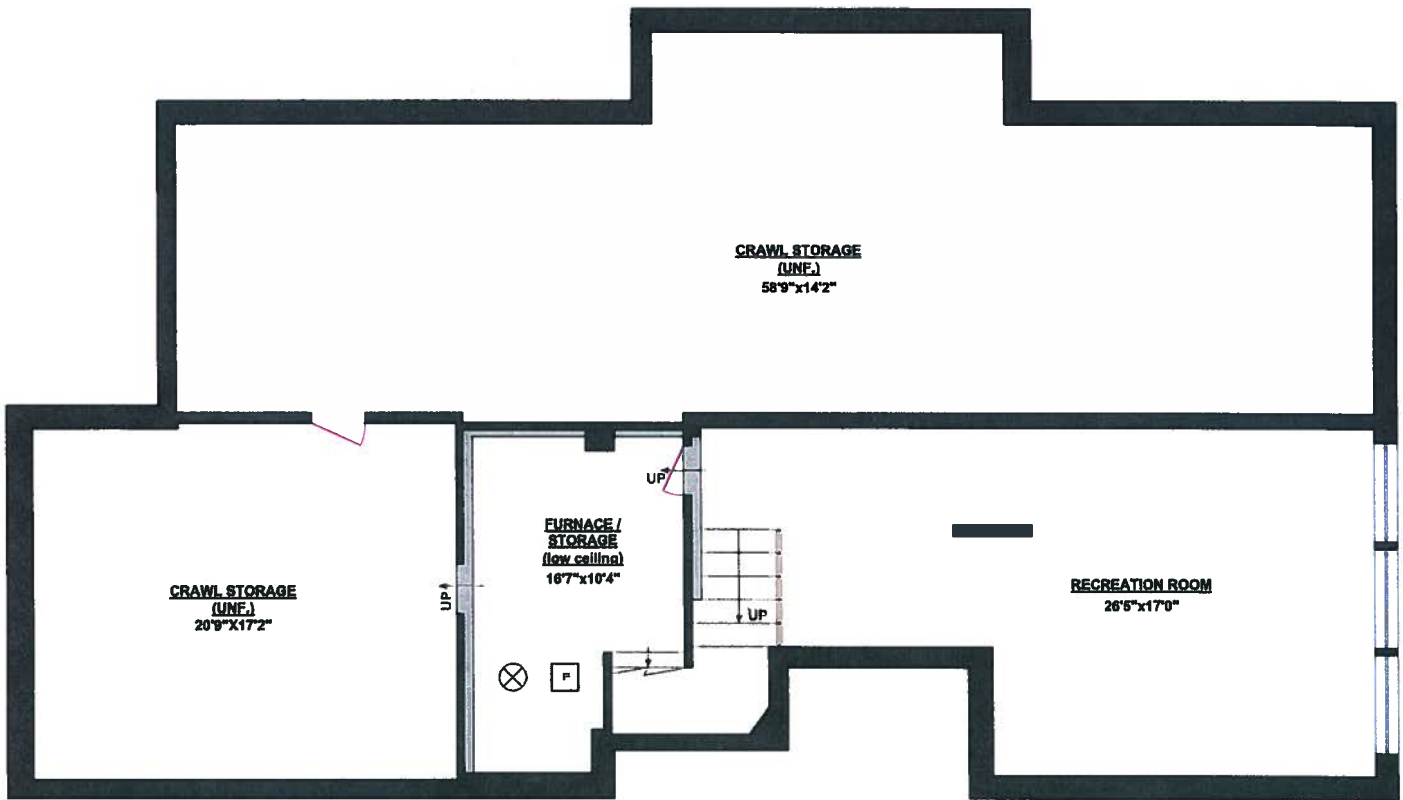
© Vancouver Realty Support Group Inc., (604) 769-7819
www.vrsupport.com



UPPER LEVEL



0 1 2 3 4 5 6
ft
© Vancouver Realty Support Group Inc., (201) 761-2919
www.bcproperty.com



LOWER LEVEL



482 Gordon Avenue, West Vancouver

| TOTALS | |
|----------------------------|---------------------|
| Main Floor (finished): | 2,199 sq.ft. |
| Upper Level (finished): | 1,897 sq.ft. |
| Lower Level (finished): | 595 sq.ft. |
| TOTAL FINISHED: | 4,691 sq.ft. |
| TOTAL UNFINISHED**: | 0 sq.ft. |
| GRAND TOTAL**: | 4,691 sq.ft. |

| OTHER AREAS: | | |
|---------------------|--------------|--------------------|
| Garage: | 630 sq.ft. | 27'9"x20'1" |
| Crawl Storages*: | 1,443 sq.ft. | 58'9"x14'2" |
| | | 20'9"x17'2" |
| Furnace/Storage*: | 198 sq.ft. | 16'7"x10'4" |
| Patio: | | 23'2"x21'8" approx |
| Patio: | | 23'2"x7'6" approx |

* Limited height ceiling area

** Excludes limited height ceiling areas listed in Other Areas

| MAIN FLOOR | |
|-------------------|--------------|
| Living Room | 20'1"x17'5" |
| Family Room | 18'1"x15'9" |
| Dining Room | 18'0"x11'10" |
| | |
| Eating Area | 14'6"x10'7" |
| Kitchen | 15'0"x12'1" |
| Wok Kitchen | 12'2"x6'0" |
| | |
| Bedroom | 14'6"x12'7" |
| Ensuite | 8'2"x4'11" |
| | |
| Entrance Hall | 12'8"x9'3" |
| | |
| Powder Room | 6'10"x5'4" |
| | |
| Mud Room | 7'9"x6'8" |

| UPPER LEVEL | |
|--------------------|--------------|
| M.Bedroom | 16'6"x14'4" |
| Ensuite | 13'9"x9'0" |
| Walk-In Closet | 9'5"x6'11" |
| | |
| Bedroom | 14'3"x12'4" |
| Ensuite | 8'10"x4'11" |
| | |
| Bedroom | 14'7"x10'1" |
| Ensuite | 8'8"x4'11" |
| | |
| Bedroom | 14'2"x11'8" |
| Semi - Ensuite | 15'2"x4'11" |
| | |
| Bedroom | 12'11"x12'7" |
| | |
| Laundry | 12'8"x6'10" |

| LOWER LEVEL | |
|--------------------|-------------|
| Recreation Room | 26'5"x17'0" |