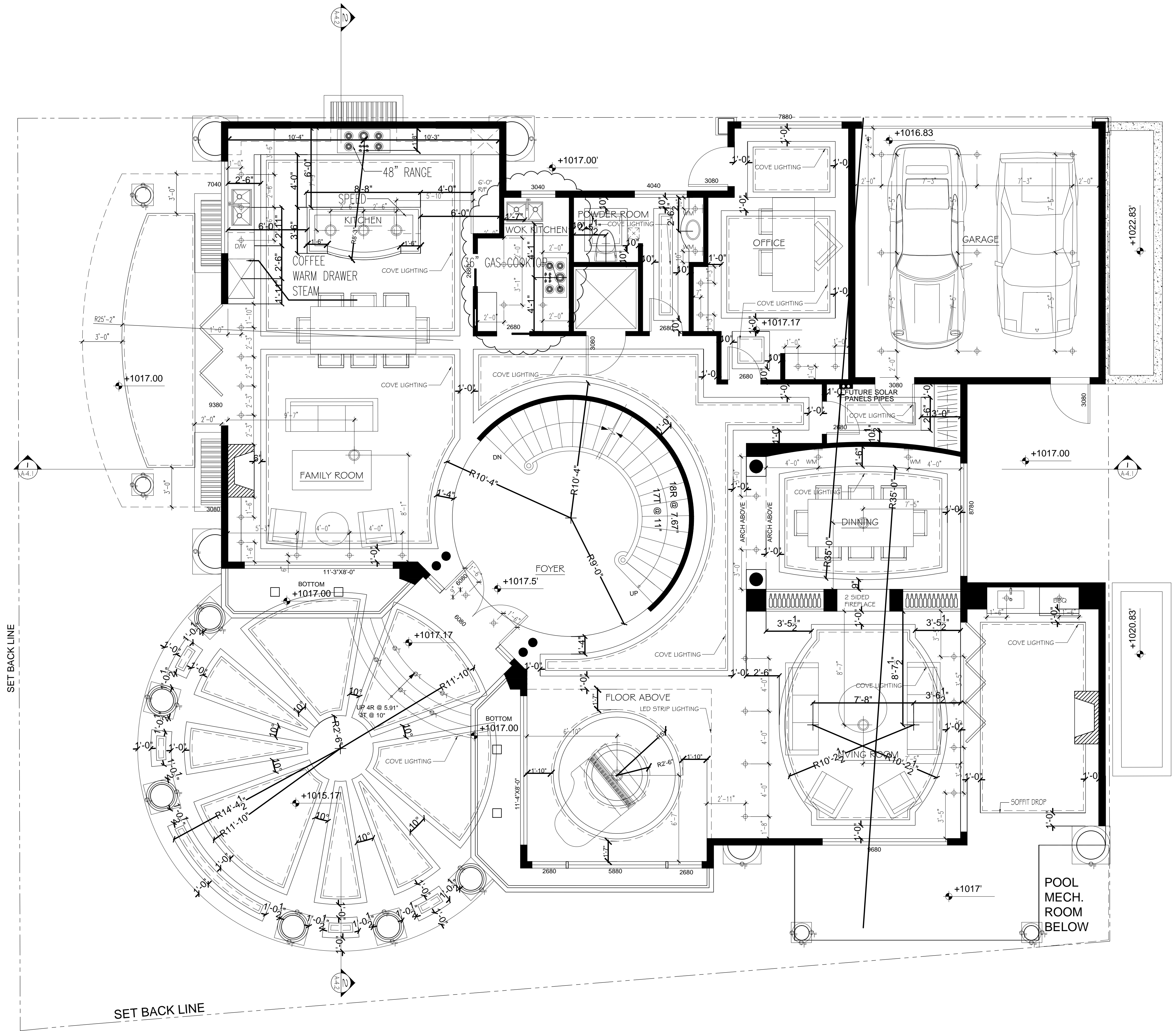


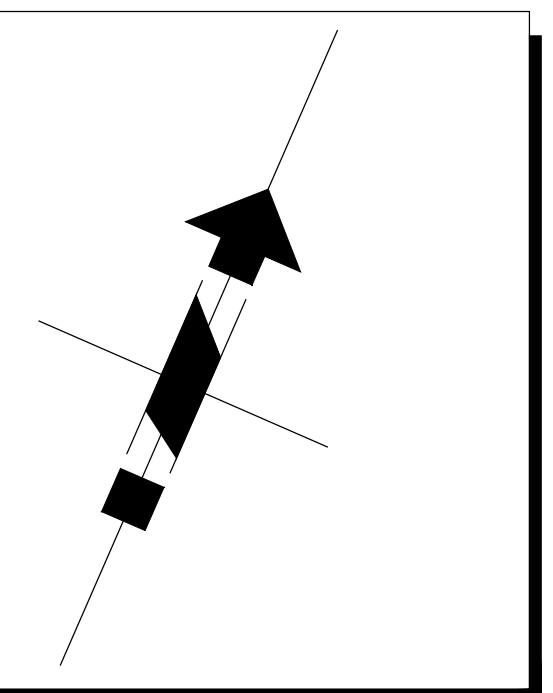
- LEGEND:
- ⊕ 4' HALOGEN POT LIGHT
  - ⊕ CEILING HUNG FIXTURE
  - ⊕ FLOOR RECEPTACLE
  - ⊕ STAIR TREAD LIGHTING
  - ⊕ FLOOR LIGHTING
  - ⊕ LED LED LIGHT
  - ⊕ WP 4' HALOGEN - WATER PROOF
  - ⊕ WM WALL MOUNTED FIXTURE - 72" A.F.F.
  - ⊕ EX. EXTERIOR WALL MOUNTED SCONCE - WATERPROOF
  - ⊕ GARAGE DOOR LIGHTING FIXTURE
  - ⊕ UNDERCABINET FLUKE LIGHT
  - ⊕ LED STRIP LIGHTING
  - ⊕ RECEPTACLE



- LEGEND:
- ⊕ SMOKE ALARM
  - ⊕ PHOTO ELECTRIC ALARM
  - ⊕ CO DETECTOR
  - ⊕ EXHAUST FAN

NOTE:  
 BEDROOMS WINDOW EGRESS TO HAVE A MIN. UNOBSTRUCTED OPENING OF 3.77 S.F. WITH NO DIM LESS THAN 15"

MAIN FLOOR AREA INCLUDING GARAGE : 2,811.33 SQ. FT.



COPYRIGHT RESERVED.  
 THIS PLAN AND DESIGN ARE, AND AT ALL TIMES REMAIN THE EXCLUSIVE PROPERTY OF THE FX40 BUILDING DESIGN CORPORATION AND MAY NOT BE USED OR REPRODUCED WITHOUT WRITTEN CONSENT. WRITTEN DIMENSIONS SHALL HAVE PRECEDENCE OVER SCALED DIMENSIONS. CONTRACTORS SHALL VERIFY AND BE RESPONSIBLE FOR ALL DIMENSIONS AND CONDITIONS ON THE JOB. THIS OFFICE SHALL BE INFORMED OF ANY VARIATION FROM THE DIMENSIONS AND CONDITIONS SHOWN ON THE DRAWING. CONTRACTORS SHALL ENSURE THAT ALL CONSTRUCTION WILL COMPLY TO ALL APPLICABLE BUILDING CODES. FX40 BUILDING DESIGN CORPORATION WILL NOT ACCEPT RESPONSIBILITY FOR VARIATIONS OR MODIFICATIONS MADE TO THESE PLANS.



Ph: (604) 922-6092  
 F: (604) 922-6081  
 1557 MARINE DRIVE  
 -WEST VANCOUVER-  
 V7V 1H9  
 www.FX40.com

PROJECT:  
 NEW BUILDING AT  
 795 ANDOVER  
 WEST VANCOUVER

DRAWING TITLE:  
 MAIN FLOOR  
 PLAN

DRAWING TITLE:	
DATE: APRIL 2016	DRAWING No.
SCALE: 1/4" = 1'-0"	A-22
DRAWN BY: S.Z.	
APPROVED BY: D.C.	

Sept 01, 2016  
 DESTROY ALL DRAWINGS PREVIOUS TO