

338 MOYNE DRIVE, WEST VANCOUVER

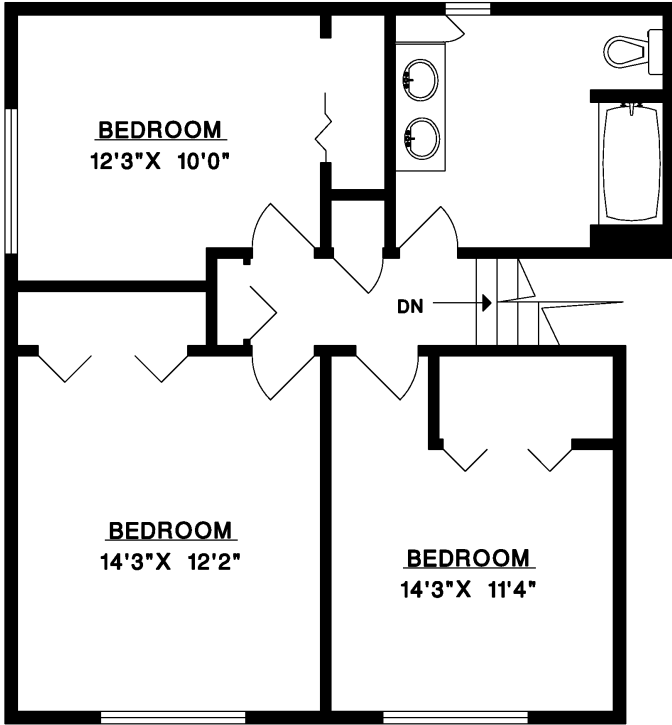
MAIN FLOOR 823 SQ.FT.  
UPPER FLOOR 729 SQ.FT.  
LOWER FLOOR 693 SQ.FT.  
TOTAL 2,245 SQ.FT.



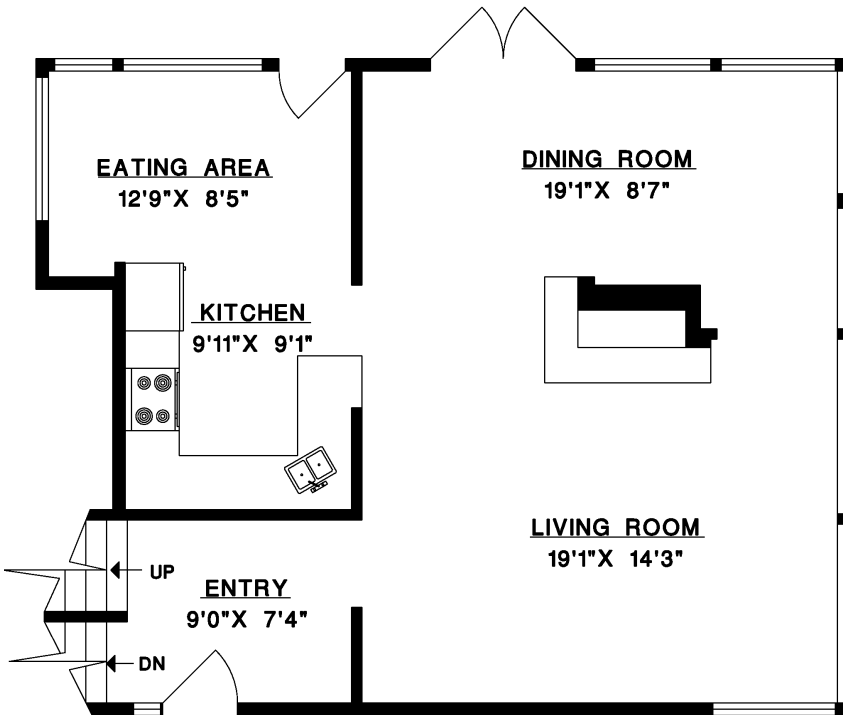
**JASON SOPROVICH**

EXCELLENCE IN THE LUXURY HOME MARKET

604.817.8812



UPPER FLOOR



MAIN FLOOR



LOWER FLOOR

FILE: 1207-47  
DATE: MAR/08



**rennie**