

5416 MARINE DRIVE
WEST VANCOUVER

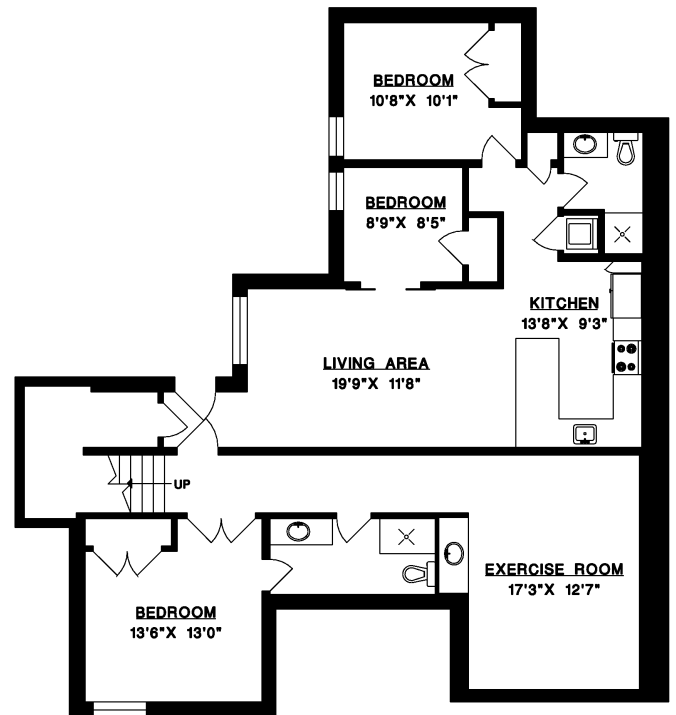
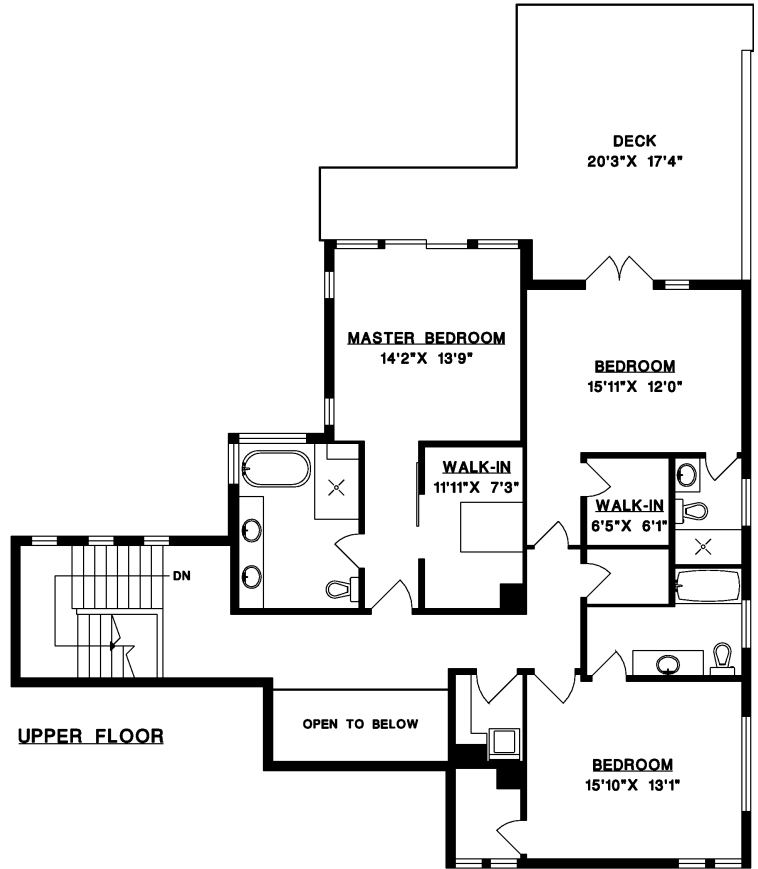
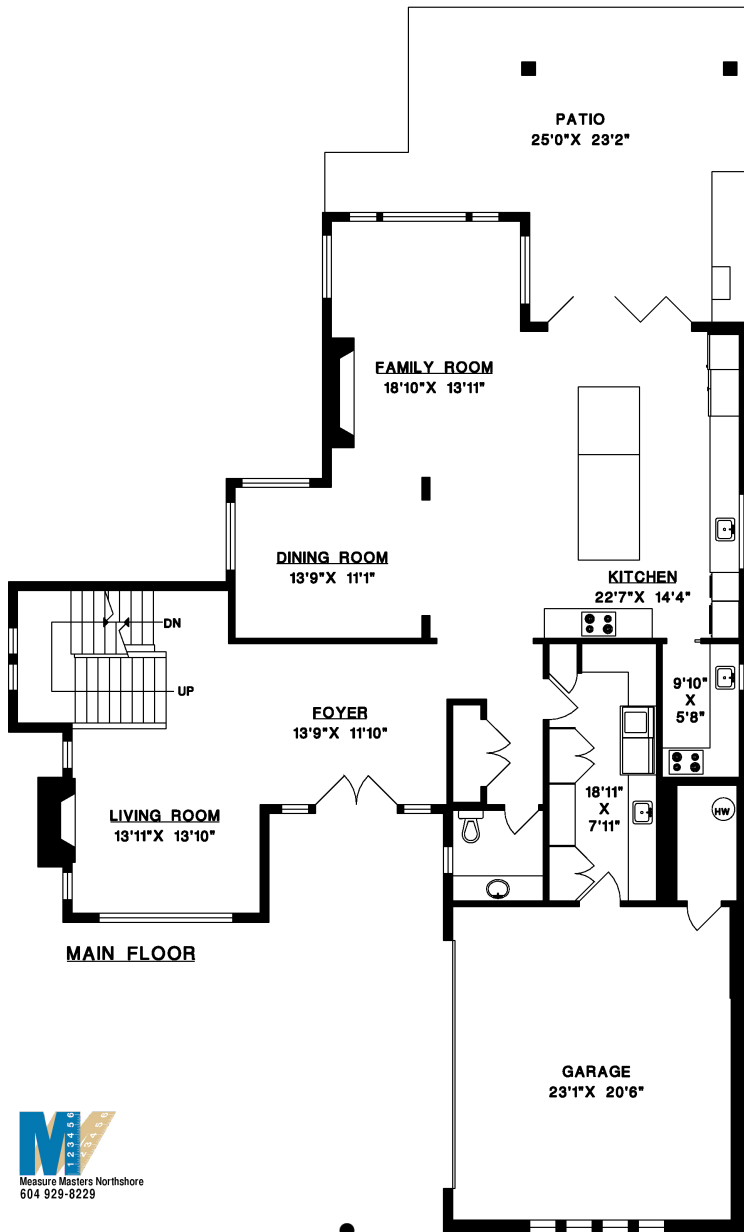
MAIN FLOOR	1,909 SQ.FT.
UPPER FLOOR	1,675 SQ.FT.
LOWER FLOOR	1,683 SQ.FT.
TOTAL	5,267 SQ.FT.
GARAGE	589 SQ.FT.
PATIO	535 SQ.FT.
DECK	426 SQ.FT.



JASON SOPROVICH

EXCELLENCE IN THE LUXURY HOME MARKET

604.817.8812



rennie