



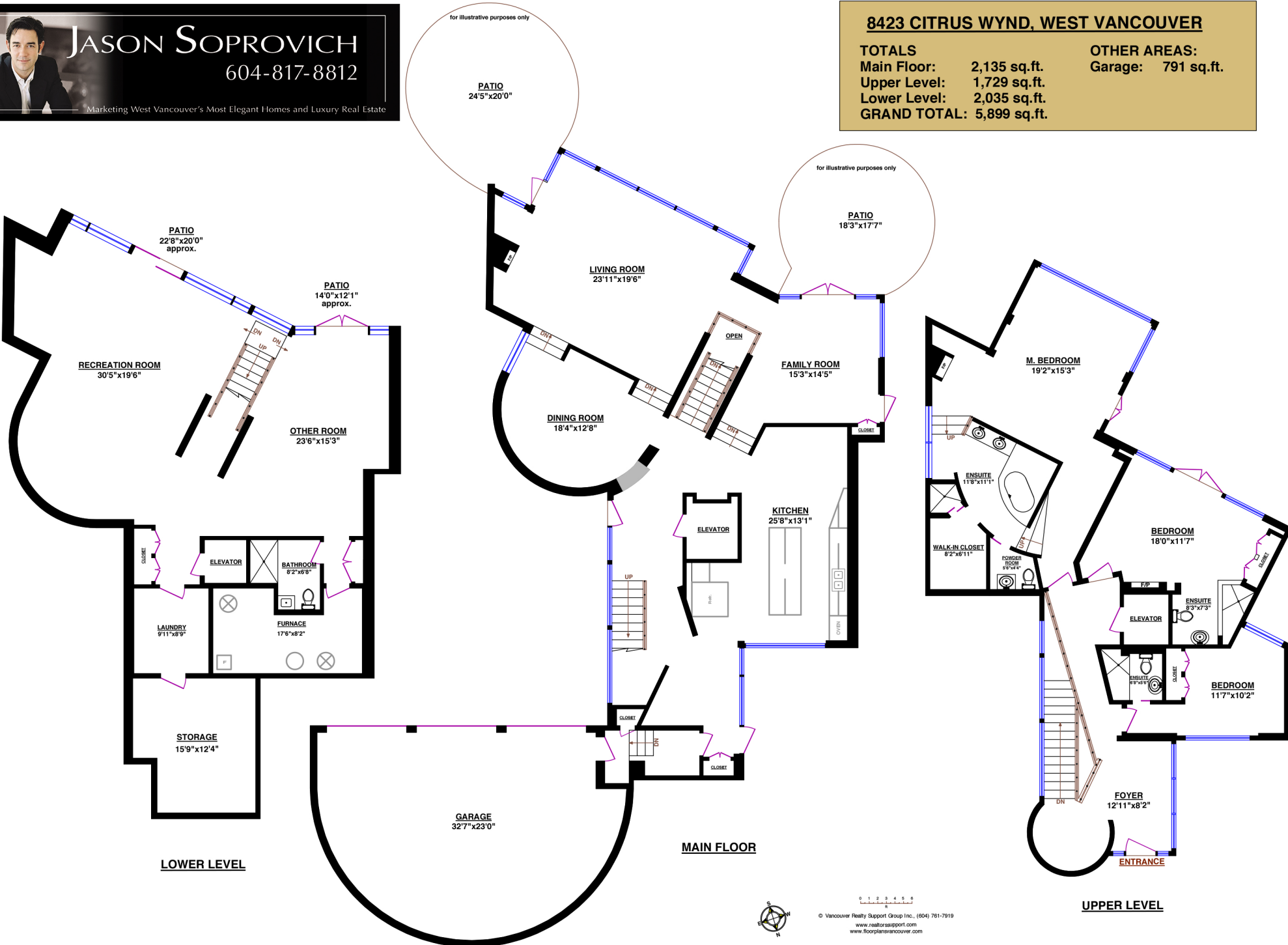
JASON SOPROVICH
604-817-8812
Marketing West Vancouver's Most Elegant Homes and Luxury Real Estate

8423 CITRUS WYND, WEST VANCOUVER

TOTALS

Main Floor: 2,135 sq.ft.
Upper Level: 1,729 sq.ft.
Lower Level: 2,035 sq.ft.
GRAND TOTAL: 5,899 sq.ft.

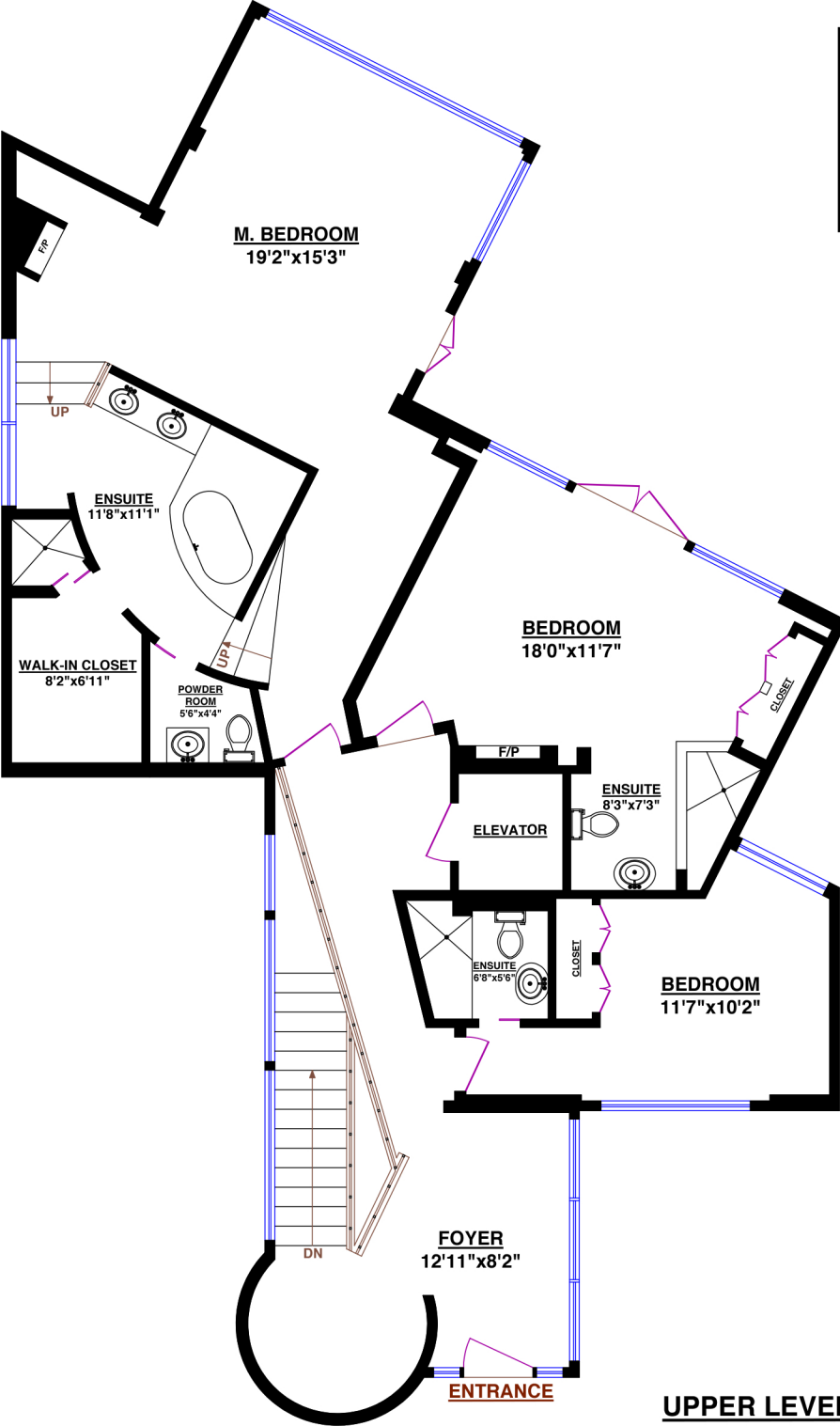
OTHER AREAS:
Garage: 791 sq.ft.





JASON SOPROVICH
604-817-8812

Marketing West Vancouver's Most Elegant Homes and Luxury Real Estate



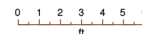
8423 CITRUS WYND, WEST VANCOUVER

TOTALS

Main Floor: 2,135 sq.ft.
Upper Level: 1,729 sq.ft.
Lower Level: 2,035 sq.ft.
GRAND TOTAL: 5,899 sq.ft.

OTHER AREAS:

Garage: 791 sq.ft.



© Vancouver Realty Support Group Inc., (604) 761-7919

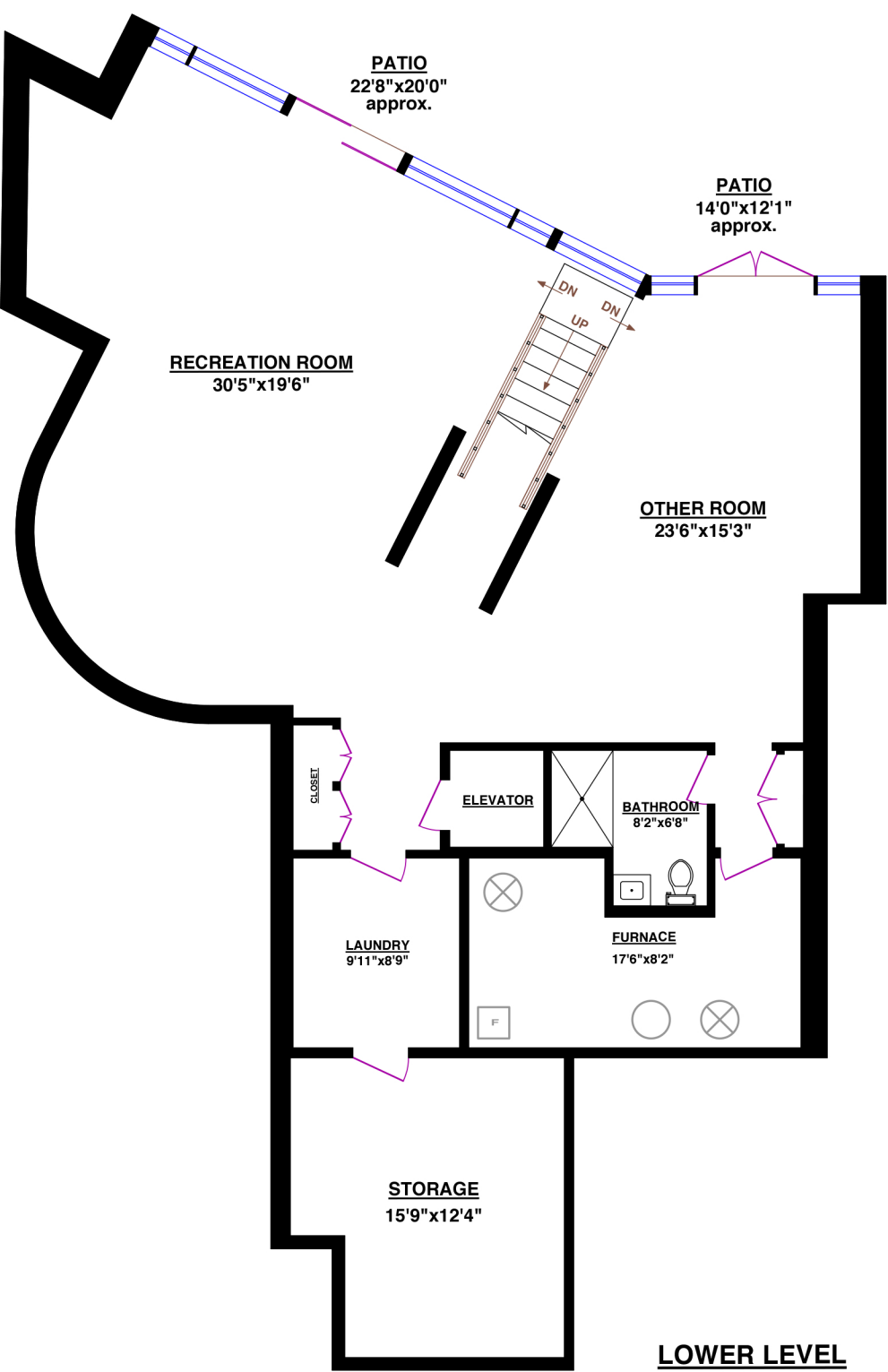
www.realtorsupport.com
www.floorplansvancouver.com

UPPER LEVEL



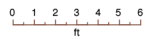
JASON SOPROVICH
604-817-8812

Marketing West Vancouver's Most Elegant Homes and Luxury Real Estate



8423 CITRUS WYND, WEST VANCOUVER

TOTALS		OTHER AREAS:
Main Floor:	2,135 sq.ft.	Garage: 791 sq.ft.
Upper Level:	1,729 sq.ft.	
Lower Level:	2,035 sq.ft.	
GRAND TOTAL:	5,899 sq.ft.	



LOWER LEVEL



JASON SOPROVICH

604-817-8812

Marketing West Vancouver's Most Elegant Homes and Luxury Real Estate

8423 Citrus Wynd, West Vancouver

TOTALS	
Main Floor:	2,135 sq.ft.
Upper Level:	1,729 sq.ft.
Lower Level:	2,035 sq.ft.
GRAND TOTAL:	5,899 sq.ft.

OTHER AREAS:			
Garage:	791 sq.ft.	32'7"x23'0"	
Patio:		14'0"x12'1"	approx.
Patio:		22'8"x20'0"	approx.
Patio:		18'3"x17'7"	approx.
Patio:		24'5"x20'0"	approx.

MAIN FLOOR	
Living Room	23'11"x19'6"
Family Room	15'3"x14'5"
Dining Room	18'4"x12'8"
Kitchen	25'8"x13'1"
Foyer	12'11"x8'2"

UPPER LEVEL	
M.Bedroom	19'2"x15'3"
Ensuite	11'8"x11'1"
Powder Room	5'6"x4'4"
Walk-In Closet	8'2"x6'11"
Bedroom	18'0"x11'7"
Ensuite	8'3"x7'3"
Bedroom	11'7"x10'2"
Ensuite	6'8"x5'6"
Foyer	12'11"x8'2"

LOWER LEVEL	
Recreation Room	30'5"x19'6"
Other Room	23'6"x15'3"
Bathroom	8'2"x6'8"
Laundry	9'11"x8'9"
Storage	15'9"x12'4"
Furnace	17'6"x8'2"

Vancouver Realty Support Group Inc.

(604) 761-7919

www.realtorssupport.com