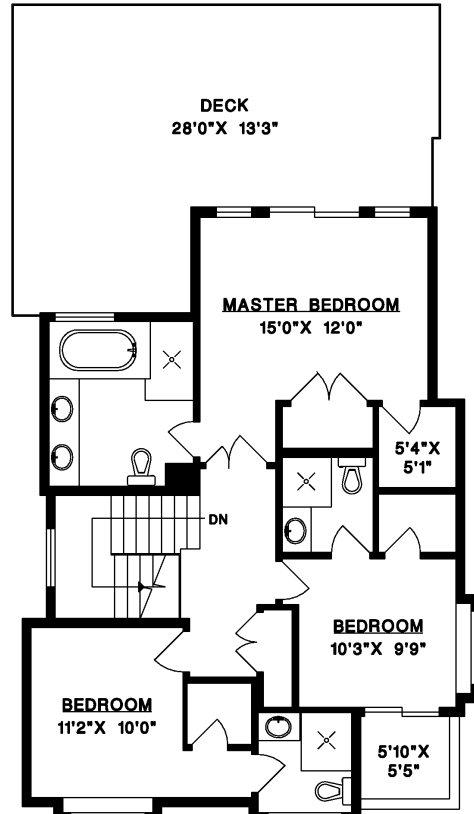
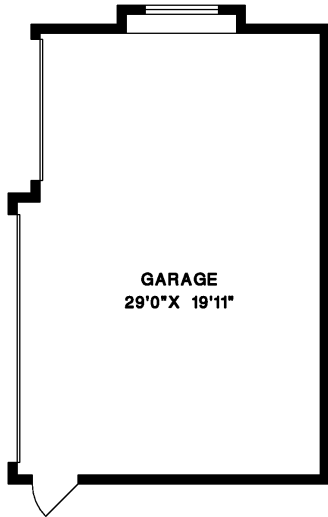


1464 INGLEWOOD AVENUE  
WEST VANCOUVER

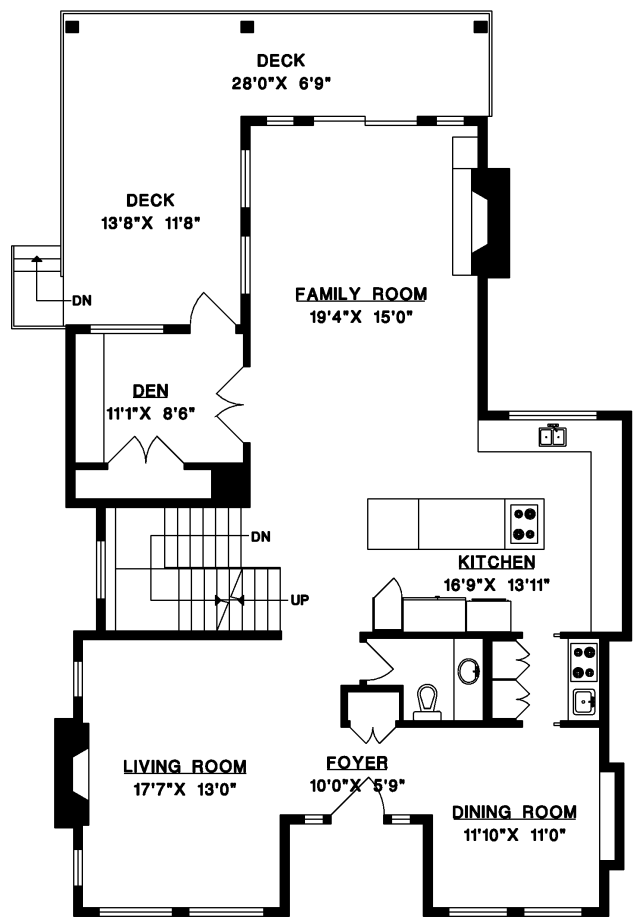
MAIN FLOOR 1,511 SQ.FT.  
 UPPER FLOOR 999 SQ.FT.  
 LOWER FLOOR 1,504 SQ.FT.  
**TOTAL 4,014 SQ.FT.**  
 GARAGE 630 SQ.FT.  
 DECKS 853 SQ.FT.



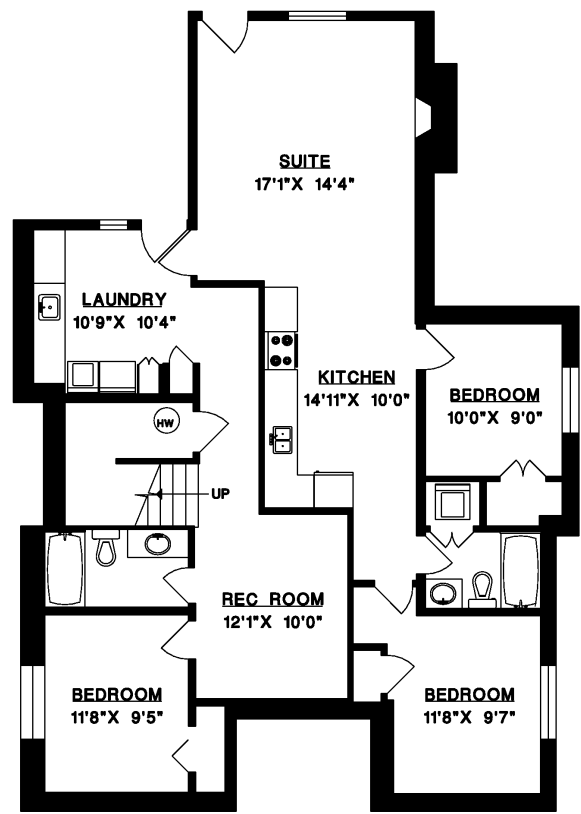
**JASON SOPROVICH**  
 EXCELLENCE IN THE LUXURY HOME MARKET  
 604.817.8812



**UPPER FLOOR**



**MAIN FLOOR**



**LOWER FLOOR**

**ROYAL LEPAGE**  
 SUSSEX - JASON SOPROVICH

